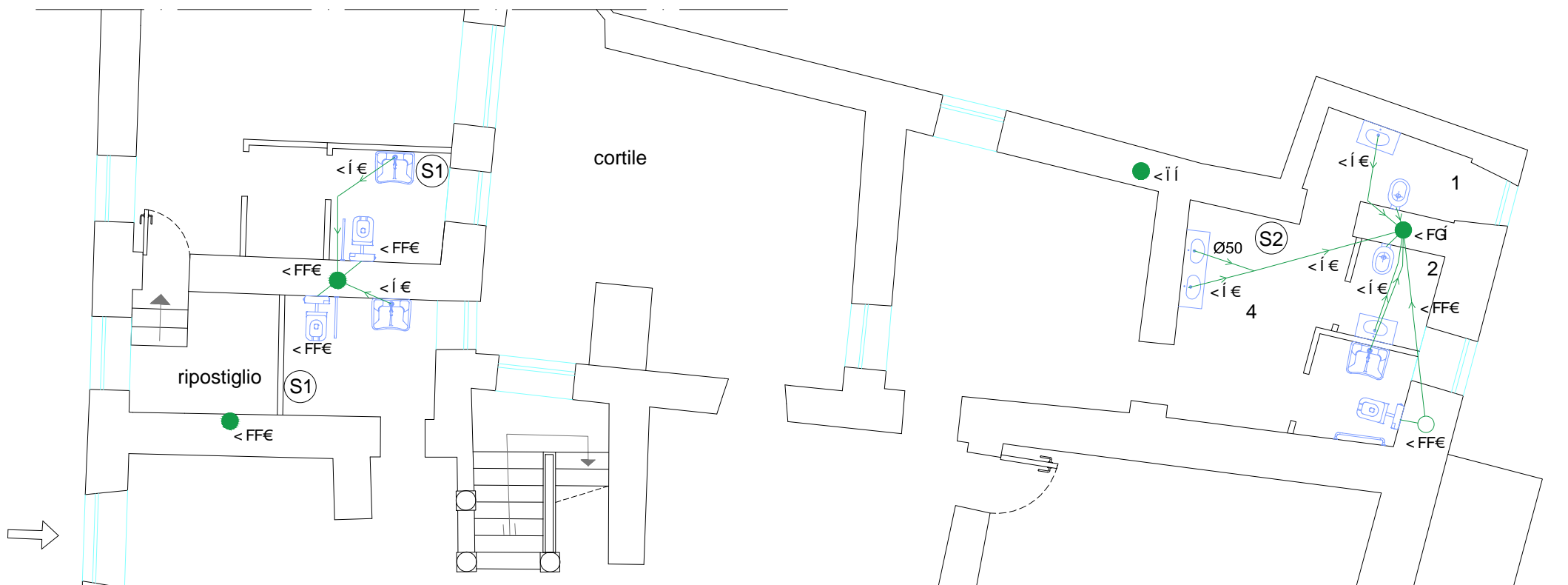


- Tubazione Acqua Fredda Sanitaria in Multistrato
- Tubazione Acqua Fredda Sanitaria in Polietilene PN10 Interrato
- Tubazione Acqua Calda Sanitaria in Multistrato



- [illegible]

The diagram illustrates a bathroom plumbing layout on a grid. It includes the following elements:

- Shower Area (Attacco Doccia):** Located on the left, showing a shower pan with two vertical lines representing drain and supply. Labels include "< OE" and "> OE".
- Toilet:** A standard toilet fixture with a tank and bowl. Labels include "< OE" and "> OE".
- Sink:** A pedestal sink with a faucet. Labels include "< OE" and "> OE".
- Drainage and Supply Lines:** Blue lines represent the main supply and drainage paths. Red lines represent specific branch lines. Labels include "< OE" and "> OE" at various points along the lines.
- Legend:** A red dot is labeled "< OE" and a blue dot is labeled "> OE".

The diagram illustrates the connection of a fire alarm system. A control panel (S2) is connected to a communication line (blue line) via a terminal block. A detector (S1) is connected to the same communication line via a terminal block. The communication line is connected to a fire alarm control unit (FACU) via a communication line (red line). The diagram also shows the connection of the communication line to the FACU via a communication line (red line).

